

Alliance Newsletter

Connecting and empowering the delivery of cancer care across our communities.

Issued Tuesday 13 January 2026

Welcome to our first newsletter of 2026!



I would like to start by thanking you for your continued commitment to improving outcomes for people affected by cancer in our communities.

This month, we are excited to shine a spotlight on innovation in early diagnosis and primary care, including our capsule sponge pilots and a new blood-borne virus testing programme. You'll also find opportunities to help shape the future of cancer care through research studies, focus groups, and training sessions - please share these with your colleagues!

Looking ahead, several Clinical Advisory Groups are scheduled in the coming weeks, and planning is well underway for our Annual Conference on Thursday 12 March. If you're interested in the latest advances in cancer treatment and care, be sure to [register](#) and keep an eye out for more details.

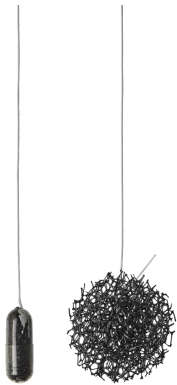
Next month, we'll be celebrating World Cancer Day and the launch of the National Cancer Plan, both on 4 February. We'd love to hear about any local celebrations or stories we can help promote. Plus, don't miss our second [SWAG Innovates Together](#) forum on Thursday 12 February.

Thank you for your ongoing support and partnership - we couldn't do this without you.

Best wishes,

Ruth Carr
Managing Director

EndoSign® Capsule Sponge testing for Barrett's Oesophagus in primary care



Two GP practices, **Minchinhampton Surgery (Gloucestershire)** and **Somer Valley Medical Group (North East Somerset)**, are piloting a new approach to detect **Barrett's Oesophagus (BO)**, the only known precursor to oesophageal adenocarcinoma.

Funded by SWAG Cancer Alliance, the pilot introduces **EndoSign® capsule sponge testing** in primary care - a simple, non-invasive test that helps identify patients with BO biomarkers and fast-track them for endoscopy.

👉 [Read more about this pilot and its early impact](#)

BBV Testing Pilot at Weston General Hospital

Weston General Hospital has launched a **three-month opt-out blood-borne virus (BBV) testing pilot** in its Same Day Emergency Care Unit.

Building on the Bristol NHS Group's successful 2024 rollout — which tested **72,000 patients** — this pilot is expected to reach **300 additional patients per month**.

Early detection of **HIV, hepatitis B and hepatitis C** enables treatment that can significantly reduce cancer risk, particularly **liver cancer**.

👉 [Find out more via UHBW NHS](#)

Ovarian Cancer Study – GPs Needed

Queen Mary University of London is recruiting GPs for an interview study exploring the management of patients with ovarian cancer.

What the study explores

- Experiences of CA125 testing
- Views on age-adjusted thresholds

What's involved

- Online interview (45–60 minutes via Teams)
- £50 voucher for participation

Please read the [participant information sheet](#) and express your interest by filling in the form linked below.

👉 [Register your interest](#)

Focus Groups: Black Women Experiencing Cancer



Power in our voices

Are you a black woman with experience of cancer in the last three years? Help shape cancer services.

Join a listening event near you:

Tuesday 3 Feb	12:30 - 2pm	The Other Place, 81-83 Meadow St, Weston-super-Mare BS23 1QL
Thursday 5 Feb	5:30 - 7pm	Macmillan Wellbeing Centre Southmead Hospital, BS10 5NB
Tuesday 10 Feb	6:30 - 8pm	Easton Community Centre BS5 6AW
Friday 13 Feb	12:30 - 2pm	BS3 Community Centre BS3 1QG

Sign up today:
Scan the QR or email cancerPCS@nbt.nhs.uk for more information



£25 thank you gift card for your time




SWAG Cancer Alliance is supporting **NBT** and **UHBW** to run focus groups to better understand the experiences of **Black women affected by cancer**.

Who can take part

Black women who have experienced cancer treatment in **Bristol or Weston-Super-Mare** within the last three years.

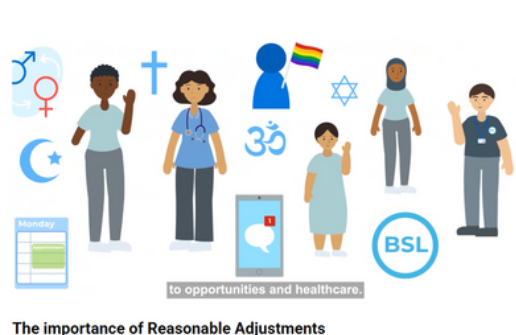
The findings will inform meaningful recommendations to reduce inequalities across the cancer care pathway.

Sign up to take part

 Or email cancerPCS@nbt.nhs.uk for more information. Please share this opportunity widely across your networks.

Events and Resources Updates

New Resource: Making Reasonable Adjustments in Cancer Care



A new learning module is now live on the **NHS Learning Hub**, supporting healthcare professionals to make reasonable adjustments for people affected by cancer.

Developed by **SWAG Cancer Alliance**, **North Bristol NHS Trust**, and **UHBW**, the resource was co-created with patients and carers and provides practical guidance to improve equity and quality of care.

Access the resource

Lunch & Learn – 22 January: The Role of Inherited Cancer Nurses

Hosted by the **South West Genomic Service**, this free webinar explores the key role of the inherited cancer nurse, funded by SWAG, in:

- Identifying and supporting patients with inherited cancers (including Lynch Syndrome)
- Mainstream genetic testing for breast, ovarian and prostate cancer

👉 [Register for the webinar](#)



Inherited cancer: the role of the nurse
 22nd January, 1-2pm

- Join us to hear about the work in Lynch Syndrome, breast, ovarian and prostate mainstream testing
- Receive details of resources to support nurses and midwives
- Hear next steps on the horizon for inherited cancer

NHS Genomic Medicine Service

Save the Date: SWAG Annual Conference - 12 March 2026



SWAG Cancer Alliance Annual Conference 2026

Advances in Cancer Treatment and Care: Empower, Innovate, Improve.

Thursday 12 March 2026
 9am - 4pm
 BAWA Bristol

Get in touch: SWAGCA@nbt.nhs.uk

Theme: Advances in Cancer Treatment and Care: Empower, Innovate, Improve

Keynote Speakers:

- **Professor Lennard Lee**, Associate Professor at University of Oxford and Medical Oncologist
- **Dr. Anna Olsson-Brown**, Consultant in Medical Oncology

Join clinicians, researchers, patient advocates, commissioners and VCSE organisations for a day of interactive talks and panels on advancements in cancer treatment and research, from genomics to long-term side effects, immuno-oncology, and more - it's a packed agenda not to be missed.

👉 [Register now](#)

SWAG Innovates Together - 12 February

Our second SWAG Innovates Together is taking place online on **Thursday 12 February from 13:00 - 14:00**.

An opportunity to build and collaborate a culture of innovation that drives forward cancer care, diagnosis, and treatment. Whether clinical or administrative, members will gain insights into real-world evaluation and innovation projects, sharing lessons learned and **steps needed to bring impactful ideas to life**.



👉 [Register now](#)

Training Opportunities

Tuesday 24 February: Cancer Study Day Live: Full-day course for Primary Care GPs & Nurses - 10:00 - 16:00

- A fully-funded place at the online event delivered by Red Whale
- BSW & Somerset priority booking until 19 January
- 150 spaces available

Tuesday 3 March: Importance of Cancer Early Diagnosis - 12:30 - 14:00

- Webinar for non-clinical primary care staff
- Hosted by Glenda Beard

Wednesday 6 March: Oral Lesions: Friend or Foe Webinar - 12:45 - 14:00

- For primary care clinicians across SWAG
- Led by Mr Ceri Hughes, Consultant Oral & Maxillofacial Surgeon

Wednesday 25 March: Cancer Study Day Live: Half-day course for ARRS roles (inc. Pharmacists, Physiotherapists, Dieticians, and Occupational Therapists) - 10:00 - 13:00

- A fully-funded place at the online event delivered by Red Whale
- Open to all ICB areas
- 75 spaces available



Get involved



**Visit our
website**



**Contact us
by email**



**Follow us on
LinkedIn**