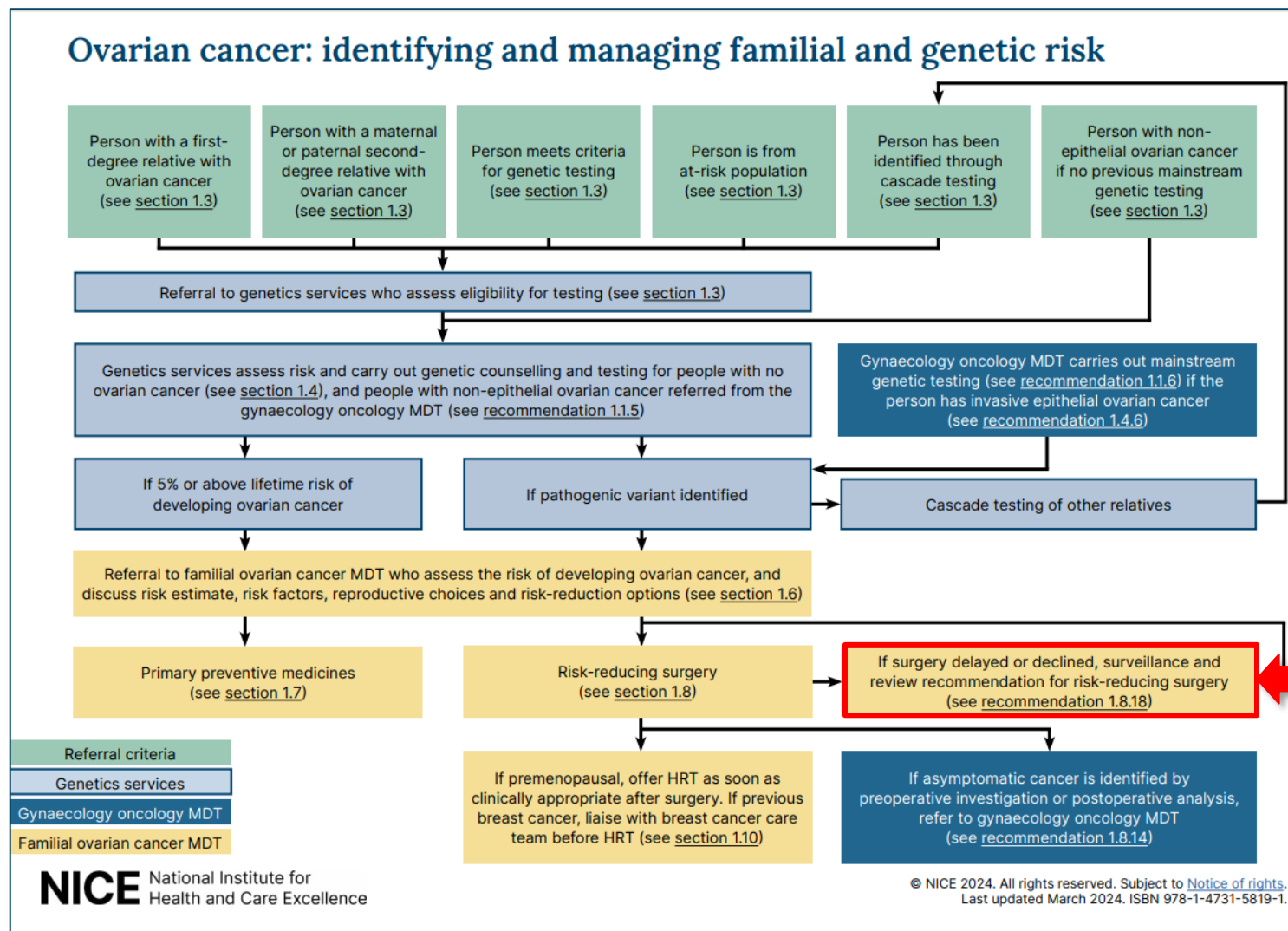

NHS Implementation of the ROCA Test

Julie C. Barnes, PhD

GENinCode Plc

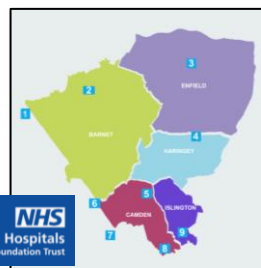


Surveillance recommended in NICE Guidance (NG241)



Implementation of the ROCA Test at UCLH

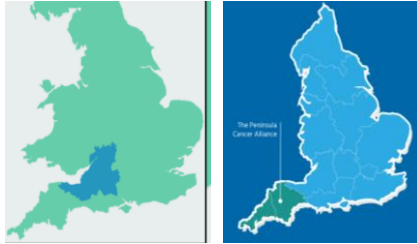
- Surveillance for the Region at UCLH FCC (Professor Adam Rosenthal)
- Referrals from NE Thames Genetic Service
- Centralised model, serving the NCL region



	NCL
Population	1.4M
Females >35	365,526
Estimated BRCA+ (0.25% prevalence); (2.5% for AJ population)	1387
Estimated max (60% uptake, mostly in young women)	823
Estimated immediate cohort	210

- Health Service Laboratory (UCLH lab) for CA125 testing.
- Data transfer to GENinCode for ROCA algorithm (using NHS number). Semi-manual to start; Full automation in development.
- DPIA approval by UCLH IG
- 0.6WTE CNS (Grade 7 or 8a) being hired ahead of annual patient review
- Year 1 funding from Cancer Alliance, to support set up and remove backlog.
- ICB agreement for funding under local tariff awaiting confirmation from April 2026

Year	Patients	Total Tests	Total Test Cost (£110 each)	Repeat Tests (8.6%)	TVUS (7% @ £241)	30-min Consultation (7% suspicious cases)	30-min Annual Review	Total Cost (£)	Net Saving
1	210	630	£69,300	£5,960	£3,543	£1,485		£80,287	£75,812
2 onwards	239	717	£78,870	£6,783	£4,032	£1,690	£12,600	£103,974	£111,481



	SWAG	Peninsular
Population	2.4M	1.8M
Females >35	677,502	545,722
Estimated BRCA+ (0.25% prevalence)	1693	1364
Estimated max (60% uptake, mostly in young women)	1,016	800
Estimated immediate cohort	254	200

Options:

Centralised model

- As per UCLH/NCL
- Local CA125 testing (Roche COBAS)
- Data transfer to GENinCode for ROCA calculation
- Key clinical hubs
 - Familial Cancer Clinics?
 - ICS coverage?
 - Considering patient journey times

Distributed Model

- Any gynaecologist for own patients.
- Sample sent to GENinCode laboratory (TDL, London)
- Data received by GENinCode via API, csv or SITAB.
- ROCA Results sent to clinician , via API or pdf report