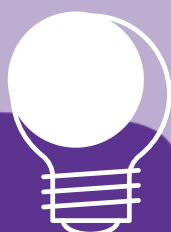




# Funding Application Tips

## Keep it simple



You don't need to use complex language. Explain your project in your own words and make sure that someone outside of your organisation can understand what you are trying to do.

## Link to cancer



Explain how your project will help people understand symptoms, screening, or early diagnosis of cancer. Make sure the connection is clearly demonstrated.

## COMMUNITY

## Communities in need

This fund is especially interested in projects that support communities who may face barriers to accessing healthcare. Be specific about who your project will work with.

## Be realistic

Outline what you will do, when, and how. Reviewers want to see a plan that is achievable within the timeframe.



## Work with others

Partnership is important. If you are working with other organisations, or people with lived experience, mention this.



## Measure success

Think about how you will show your project has made a difference. This might be the number of people attending a workshop, feedback, or case studies.



## Value for money

Explain clearly what you need the money for and how much it will cost. A simple breakdown is fine - reviewers want to know how the money will be spent.



## Think about risks

Every project has risks. Think about what could go wrong and how you would manage it. For example, if people don't sign up to events, how will you manage this?



## Keep to priorities

Make sure your project clearly supports at least one of the key priorities: reducing health inequalities, improving early diagnosis, and/or communication campaigns.



We look forward to receiving your applications. If you require any support or assistance completing your application, please contact us at [swagca@nbt.nhs.uk](mailto:swagca@nbt.nhs.uk).