

Somatic Testing Pathway

Legend:

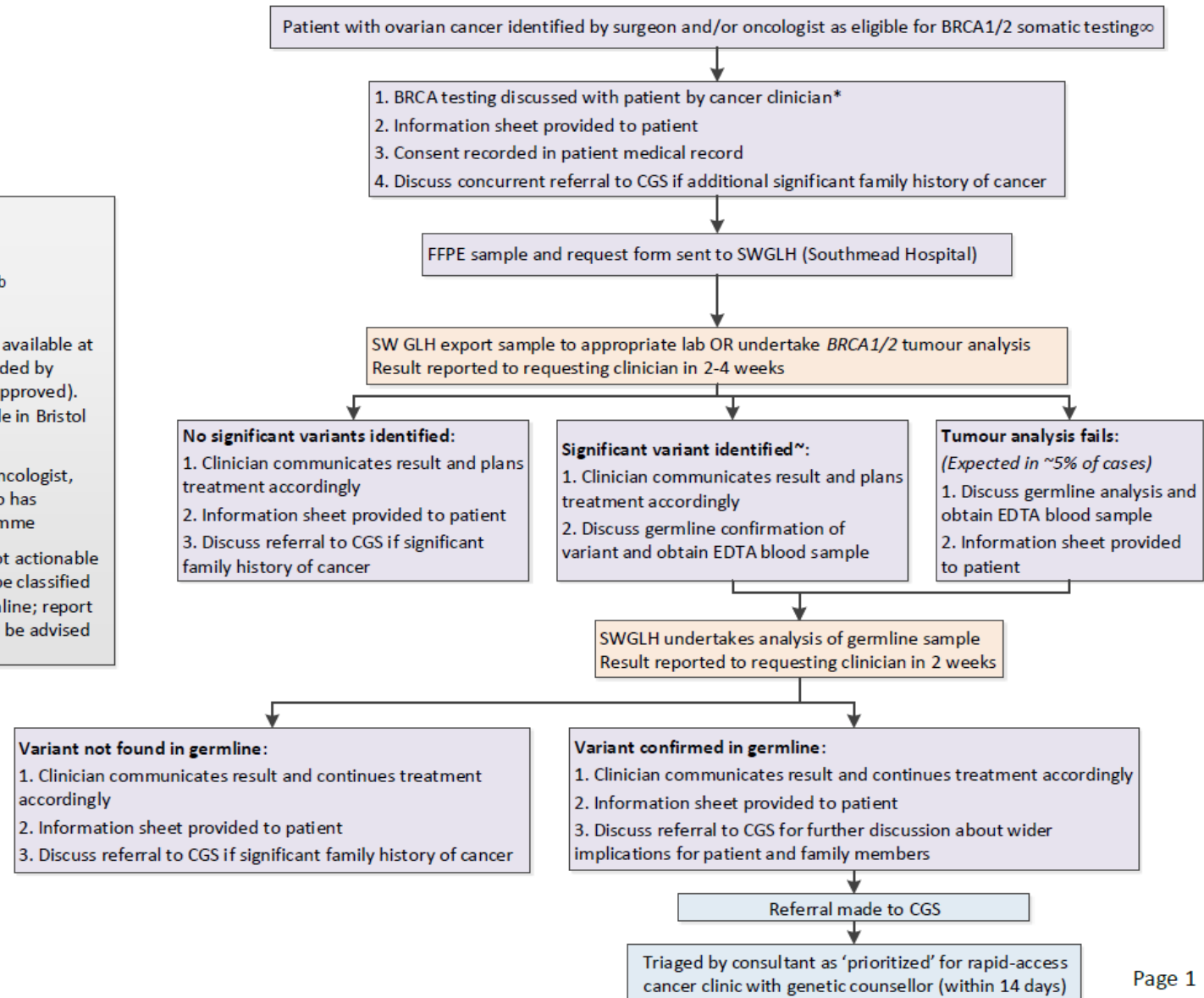
- Cancer clinical team
- SW GLH
- Bristol regional CGS

NGTD = National Genomic Test Directory
 VUS = Variant of uncertain significance
 SW GLH = SouthWest Genomic Laboratory Hub
 CGS = Clinical Genetics Service

∞ Testing for patients on 3rd line patients available at Cardiff, Manchester & Royal Marsden funded by AstraZeneca (and 1st line when Olaparib approved). Testing for 1st line patients will be available in Bristol from Autumn 2019

* Cancer clinician may include surgeon, oncologist, clinical nurse specialist, registrar, etc. who has completed regional BRCA training programme

~ Rarely, a variant may be found that it not actionable (i.e. for PARP inhibitor therapy) but may be classified as (likely) pathogenic if confirmed in germline; report will indicate when germline testing would be advised



Germline Testing Pathway

